

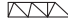
- SK1700 - 1.70x1.70 m
- SN2050 - 2.05x2.05 m


H=Altezza sotto gancio
 H=Height under hook
 H=Hauteur sous crochet





Torre/Reazioni | Masts/Reactions | Mat/Réactions | Maste/Eckdrücke | Mástil/Reacciones | Tramo/Reacções

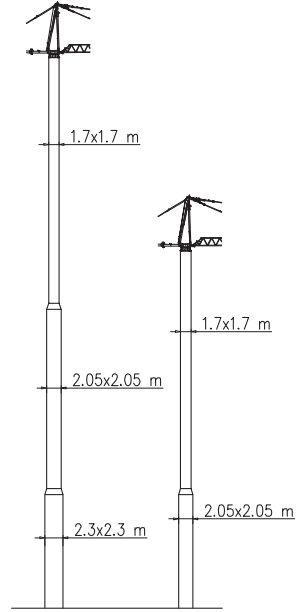
SK1700

 50 m → 65 m

		Torre/Masts/Mat/Maste/Mástil/Tramo													
TRO	H[m]	4f/4f BF117	4f/4f BF052	4f/4f BF039	4f/2f SB117	4f/2f SB052	4f/2f SB039	2f/2f ST117	2f/2f ST052	2f/2f ST039	2f/2f STB117	2f/2f STB039	2f/2f RA039	4f/2f SBB039	4f/2f SBB117
	52	1	1		1			2							
	55.9	2			1			1	1	1					
TTD	52		3			1			6						
	46.8	1			1			2							
	35.1							3							
	55.9	2			1			1	1	1					
	59.9		4									7	1	1	
	50.7											6	1	1	1

		Torre/Masts/Mat/Maste/Mástil/Tramo													
CAF	H[m]	4f/4f BF117	4f/4f BF052	4f/4f BF039	4f/2f SB117	4f/2f SB052	4f/2f SB039	2f/2f ST117	2f/2f ST052	2f/2f ST039	2f/2f STB117	2f/2f STB039	2f/2f RA039	4f/2f SBB039	4f/2f SBB117
	55.8	1			1			2		1					
	50.7							4		1					
	59.8	1			1			2	2						
	40.3							3							
	57.2		3			1			6						
	40.3											7	1	1	
	59.8											12	1	1	
	59.8	1										7	1	1	1

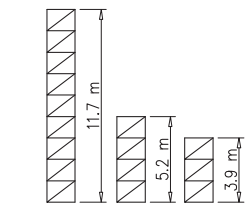
		Torre/Masts/Mat/Maste/Mástil/Tramo													
CATR IIII	H[m]	4f/4f BF117	4f/4f BF052	4f/4f BF039	4f/2f SB117	4f/2f SB052	4f/2f SB039	2f/2f ST117	2f/2f ST052	2f/2f ST039	2f/2f STB117	2f/2f STB039	2f/2f RA039	4f/2f SBB039	4f/2f SBB117
	52							4							
	52								9						
	40.3							3							
CATC	45.5							3	1						
	33.8	1	1		1										
	52	1										5	1		1
	52											8	1		1
	50.7											11	1		



	H=0-45 m	H=46-60 m
R1	89 t	106 t
R2	88 t	106 t
R3	74 t	95 t
M	194 tm	336 tm

Peso zavorra | Ballast weight | Poids du lest | Ballastgewicht | Peso de lastre

H	Tot.
0-30 m	63600 kg
31-45 m	70600 kg
46-48 m	77600 kg
49-54 m	98600 kg
55-60 m	105600 kg



Torre/Reazioni | Masts/Reactions | Mat/Réactions | Maste/Eckdrücke | Mástil/Reacciones | Tramo/Reações

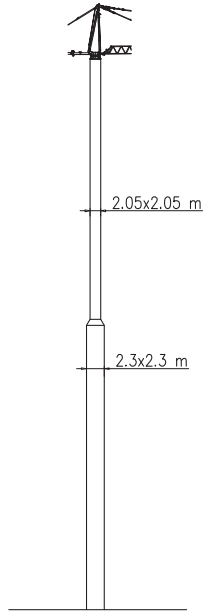
SN2050

50 m → 65 m

		Torre/Masts/Mat/Maste/Mástil/Tramo													
TRO	H[m]	4f/4f BF117	4f/4f BF052	4f/4f BF039	4f/2f SB117	4f/2f SB052	4f/2f SB039	2f/2f ST117	2f/2f ST052	2f/2f ST039	2f/2f STB117	2f/2f STB039	2f/2f RA039	4f/2f SBB039	4f/2f SBB117
	62.4	2			1			2		1					
	61.1	1	1		1			2	1	1					
TTD	46.8		4			1		4							
	52	1	1		1			2							
	62.4		3									10	1	1	
	62.4	1										9	1		1
	62.4	1										11	1	1	

		Torre/Masts/Mat/Maste/Mástil/Tramo													
CAF	H[m]	4f/4f BF117	4f/4f BF052	4f/4f BF039	4f/2f SB117	4f/2f SB052	4f/2f SB039	2f/2f ST117	2f/2f ST052	2f/2f ST039	2f/2f STB117	2f/2f STB039	2f/2f RA039	4f/2f SBB039	4f/2f SBB117
	63.7	1			1			3							
	67.6	2			1			2							
	67.6		4			1			7						
	50.7		1		1	1		3							
	52				1			3							
	65		3			1						9	1		
	63.7	1										8	1		1
	65.3	1				1						10	1		

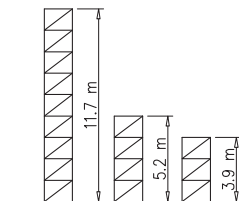
		Torre/Masts/Mat/Maste/Mástil/Tramo													
CATR	H[m]	4f/4f BF117	4f/4f BF052	4f/4f BF039	4f/2f SB117	4f/2f SB052	4f/2f SB039	2f/2f ST117	2f/2f ST052	2f/2f ST039	2f/2f STB117	2f/2f STB039	2f/2f RA039	4f/2f SBB039	4f/2f SBB117
	59.8	1			1			2		2					
	59.8		3			1			5	2					
	45.5					1		3							
	49.4		1				1			9					
CATC	32.5				1			1		1					
	59.8		3									8	1	1	
	59.8	1										9	1	1	
	59.8	1										7	1		1



H=0-45 m		H=46-68 m	
R1	125 t	R1	140 t
R2	130 t	R2	144 t
R3	95 t	R3	103 t
M	486 tm	M	570 tm

Peso zavorra | Ballast weight | Poids du lest | Ballastgewicht | Peso de lastre

H	Tot.
0-55 m	102320 kg
56-68 m	112460 kg



Curve di carico | Courbes de charges | Load diagrams | LastKurven | Curvas de cargas

Pmax 4000 kg

	25600 kg		65 m	3.5	30	34	36	38	40	42	44	46	48	50	52	54	56	58	60	62	65	m
				4000	4000	3360	3190	2940	2770	2490	2350	2220	2110	1950	1850	1760	1650	1570	1500	1300	1000	kg
	25600 kg		63 m	3.5	30	34	36	38	40	42	44	46	48	50	52	54	56	58	60	63	m	
				4000	4000	3360	3190	2940	2770	2490	2350	2220	2110	1950	1850	1760	1650	1570	1500	1300	kg	
	25600 kg		60 m	3.5	30	34	36	38	40	42	44	46	48	50	52	54	56	58	60	m		
				4000	4000	3480	3250	3050	2860	2700	2550	2410	2280	2170	2060	1960	1870	1780	1700	kg		
	25600 kg		56 m	3.5	34	36	38	40	42	44	46	48	50	52	54	56	m					
				4000	4000	3730	3510	3300	3030	2870	2670	2540	2400	2300	2130	2000	kg					

Pmax 8000/4000 kg

	25600 kg		65 m	3.5	16	20	24	28	30	34	36	38	40	42	44	46	48	50	52	54	56	58	60	62	65	m
				8000	8000	6360	5190	4360	4000	3360	3190	2940	2770	2490	2350	2220	2110	1950	1850	1760	1650	1570	1500	1300	1000	kg
	25600 kg		63 m	3.5	16	20	24	28	30	34	36	38	40	42	44	46	48	50	52	54	56	58	60	63	m	
				8000	8000	6360	5190	4360	4000	3360	3190	2940	2770	2490	2350	2220	2110	1950	1850	1760	1650	1570	1500	1300	kg	
	25600 kg		60 m	3.5	16	20	24	28	30	34	36	38	40	42	44	46	48	50	52	54	56	58	60	m		
				8000	8000	6360	5190	4360	4000	3480	3250	3050	2860	2700	2550	2410	2280	2170	2060	1960	1870	1780	1700	kg		
	25600 kg		56 m	3.5	18	20	24	28	30	34	36	38	40	42	44	46	48	50	52	54	56	m				
				8000	8000	7500	6150	5190	4810	4000	3730	3510	3300	3030	2870	2670	2540	2400	2300	2130	2000	kg				

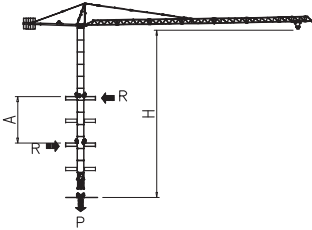
Pesi e ingombri | Packing list | Liste de colisage | Gewicht und abmessungen

Denominazione Description	Disegno Draw	Pezzi Pieces	Dimensioni-Dimensions (mm)			Peso-Weight (kg)		
			L	W	H	Unit	Total	
Elemento di braccio Jib element Élément de èche Elemento de flecha	n°1		1	5760	1440	1600	950	-
	n°2		1	5820	1400	1470	750	-
	n°3		1	5860	1400	1470	810	-
	n°4		1	5860	1400	1470	730	-
	n°5		1	5860	1400	1470	740	-
	n°6		1	5850	1400	1470	700	-
	n°7		1	5820	1400	1470	680	-
	n°8		1	5820	1400	1470	740	-
	n°9		1	5850	1400	1450	520	-
	n°10		1	5740	1400	1450	410	-
	n°11		1	5770	1400	1450	330	-
	n°12		1	4350	1400	1450	320	-
	Punta		1	800	1400	1400	170	-
Tirante completo Complete tie rod Tirant complète Tirante completo		12	6500	200	200	240	3540	
Cuspide Cusp Pointre Cúspide		1	8300	1500	1000	2700	-	
Contorbraccio completo Complete counterjib Contreflèche complète Contraflecha completa		1	9300	1650	600	2000	-	
Gruppo girevole Slewing group Table tournante Grupo giratorio		SK1700	1	5100	1810	1400	6000	-
		SN2050	1	5100	1810	1400	6300	-
Carrello Trolley Chariot Carretilla		1	1900	1620	1000	400	-	
Ballatoio con cabina Access balcony with cabin Porte cabine Balcón corrido con cabina		1	2500	2150	2450	1000	-	

Pesi e ingombri | Packing list | Liste de colisage | Gewicht und abmessungen

Denominazione Description	Disegno Draw	Pezzi Pieces	Dimensioni-Dimensions (mm)			Peso-Weight (kg)			
			L	W	H	Unit	Total		
Blocchi contrappeso Counterweight block Contre-poids Bloques de contrapeso	VX28	9	1100	280	3700	2840	25600		
Elemento di torre Mast element Élément de mature Elemento de torre	ST039	SK1700 SN2050	— —	3900 3900	1785 2110	1785 2110	1750 2320	— —	
	ST052	SK1700 SN2050	— —	5200 5200	1785 2110	1785 2110	2250 2850	— —	
	ST117	SK1700 SN2050	— —	11700 11700	1785 2110	1785 2110	4690 5790	— —	
	SB039	SK1700 SN2050	— —	3900 3900	1785 2110	1785 2110	2100 2710	— —	
	SB052	SK1700 SN2050	— —	5200 5200	1785 2110	1785 2110	2600 3350	— —	
	SB117	SK1700 SN2050	— —	11700 11700	1785 2110	1785 2110	4830 7000	— —	
	BF039	SK1700 SN2050	— —	3900 3900	1785 2110	1785 2110	2450 3370	— —	
	BF052	SK1700 SN2050	— —	5200 5200	1785 2110	1785 2110	3390 3880	— —	
	BF117	SK1700 SN2050	— —	11700 11700	1785 2110	1785 2110	6920 8180	— —	
	Elemento di base Base element Mat de base Elemento de base	BA052	SK1700 SN2050	1 1	5200 5200	2060 2260	2060 2260	3650 4040	— —
	Carro di base Base carriage Chassis de base Cruceta de base		5x5	1	7550	670	780	2300	2300
			6x6	1	8870	670	780	2500	2500
5x5			2	3530	420	780	1060	2120	
6x6			2	4320	420	780	1200	2400	
Puntoni di base Rafter Jambes de force Cabrios de base		5x5	4	4250	240	300	280	1120	
		6x6	4	4560	420	300	420	1680	
Elemento a perdere Disposable frame Chassis a perdre Bastidor desechable		SK1700	1	1840	1910	1910	1430	—	
		SN2050	1	2600	2260	2260	2030	—	
Elemento recuperabile Recoverable frame Chassis récupérable Bastidor recuperable		SK1700	1	1300	2170	2170	1720	—	
		SN2050	1	1300	2620	2620	1860	—	
Bogie di traslazione Driven bogie Boggie motoriseè Balancin de traslaciòn			4	1160	700	600	700	2800	
Blocco zavorra di base Base ballast block Lest de base Blaque de lastre		5x5	2	5300	1000	600	7300	14600	
		6x6	2	6400	1200	600	10600	21200	
		5x5	—	4100	1600	300	3500	—	
		6x6	—	4800	2000	300	5070	—	
Corsoio di montaggio Climbing cage Cage de montage Jaula de montaje		SK1700	1	8300	2600	2500	6000	—	
		SN2050	1	8300	2900	2700	6700	—	

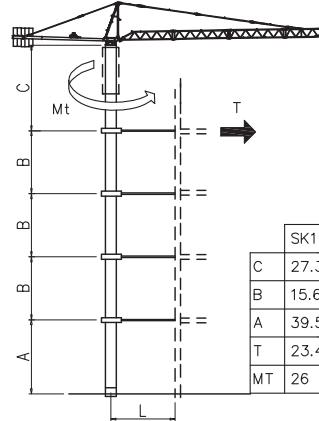
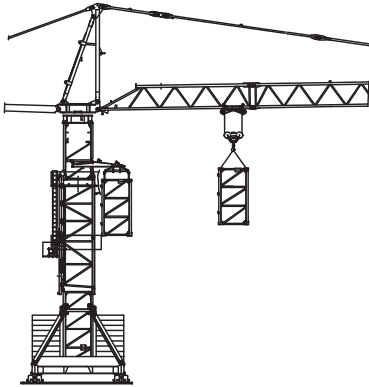
Gru in cavedio | Télescopage sur dalles | Climbing crane | Kletterkrane im Gebäude



SN2050	H (m)	A (m)	R (°)	P (°)
	9	9	45.3	
	10	10	42	
	11	11	39.3	
	12	12	37	
	13	13	35	
	14	14	33.4	
	15	15	32	
	16	16	30.7	
	17	17	29.6	
	18	18	28.6	
	19	19	27.8	
20	20	27		

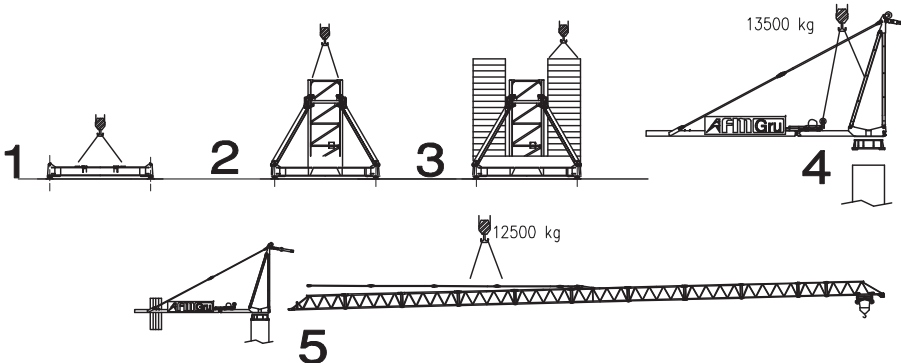
Apertura passaggio gru
Opening for crane passing

Sopralzo idraulico | Telescopic | External climbing | Kletterkrane


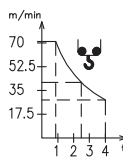
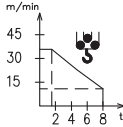
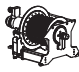

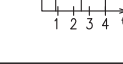
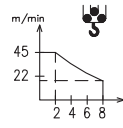

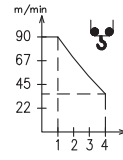
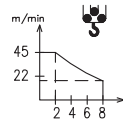
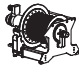

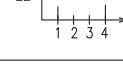
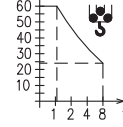

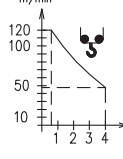
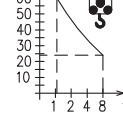


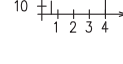




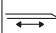



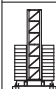
	SK1700	SN2050
C	27.3 m	31.2 m
B	15.6 m	19.5 m
A	39.5 m	50 m
T	23.4 m	27.5 m
MT	26 t xm	26 t xm

Montaggio | Montage | Erection | Montage | Montaje | Montagem



Meccanismi | Mechanisms | Mécanismes | Antriebe | Mecanismos

Sollevamento V33.60 Hoisting Levage Heben Elevaci3n Eleva7ao							 m/min 70 52.5 35 17.5 1 2 3 4 t	 m/min 45 30 15 2 4 6 8 t	V33.60 24 kW 40 kVA  260 m	
	m/min	2.5	15	27	43	56				71
	t	4	4	4	2.5	1.7	0.8			
							 m/min 1.2 7.5 13.5 21.5 28 35.5 1 2 3 4 t	 m/min 45 22 2 4 6 8 t		
m/min	1.2	7.5	13.5	21.5	28	35.5				
t	8	8	8	5	3.4	1.6				
Sollevamento V45.90 Hoisting Levage Heben Elevaci3n Eleva7ao							 m/min 90 67 45 22 1 2 3 4 t	 m/min 45 22 2 4 6 8 t	V45.90 33 kW 58 kVA  340 m 700 m (L)	
	m/min	4	18	36	56	74				90
	t	4	4	4	3	2	1			
							 m/min 2 9 18 28 37 45 1 2 3 4 t	 m/min 60 50 40 30 20 10 1 2 4 8 t		
m/min	2	9	18	28	37	45				
t	8	8	8	6	4	1				
Sollevamento V50.100 Hoisting Levage Heben Elevaci3n Eleva7ao							 m/min 120 100 50 10 1 2 3 4 t	 m/min 60 50 40 30 20 10 1 2 4 8 t	V50.100 37 kW 60 kVA  270 m 500 m (L)	
	m/min	4	22	48	84	100				120
	t	4	4	4	2	1.5	0.6			
							 m/min 2 11 24 42 50 60 1 2 3 4 t	 m/min 60 50 40 30 20 10 1 2 4 8 t		
m/min	2	11	24	42	50	60				
t	8	8	8	4	3	1.2				

Carrello Trolleying Distribution Katzfahren Distribuci3n Distribui7ao			0 → 85	m/min	3.6 kW	Potenza elettrica necessaria Puissance électrique nécessaire Necessary electric power Anschlusswert Potencia
Rotazione Slewing Orientation Schwenken Orientaci3n Rota7ao			0 → 0,9	giri/min tr/min rp/min	4.4 kW @ 1200rpm n° 2 x 2.2 kW	
Traslazione Travelling Translation Kranfahren Traslaci3n Traslao7ao			0 → 20	m/min	7.5 kW	

Rete elettrica | Réseau | Mains supply | Netzstrom | Red | Rede electrica

400 V - 50 Hz